

THIS SPACE FOR DESIGNER/ENGINEER APPROVAL

| | | |
|-------------------------|------------|------------------------|
| Job/Customer _____ | Date _____ | Contractor _____ |
| Model Specified _____ | Qty _____ | Approved By _____ |
| Designer/Engineer _____ | Date _____ | Contractor's PO# _____ |
| Submitted by _____ | Date _____ | Other _____ |

8141 Series

**Full Port Forged Brass Uni-Flange Ball Valve
w/ Detachable Rotating Flange, Multi-Function Drain,
Adjustable Packing Gland, Nuts & Bolts
Press x Rotating Flange**

**6
ISO 9001**

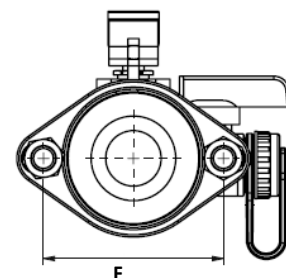
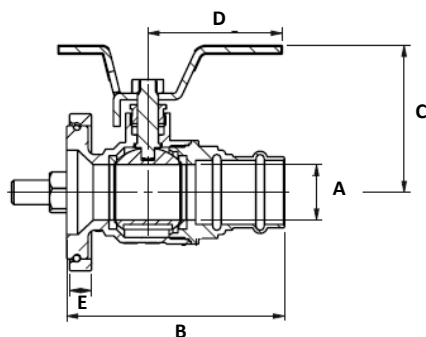
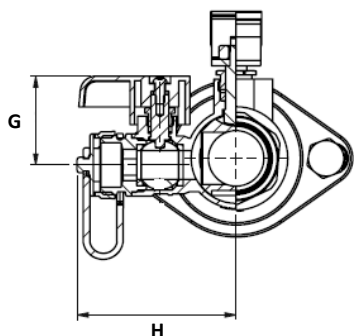


| Item # | Size | CTN/CASE | A | B | C | D | E | F | G | H |
|---------|--------|----------|---------|---------|---------|-------|-----|---------|--------|---------|
| 81413HV | 3/4" | 1/20 | 3/4 | 3 11/16 | 2 1/4 | 2 3/8 | 3/8 | 3 3/16 | 1 9/16 | 2 3/4 |
| 81414HV | 1" | 1/20 | 1 | 3 7/8 | 2 5/8 | 2 3/8 | 3/8 | 3 3/16 | 1 9/16 | 2 13/16 |
| 81415HV | 1 1/4" | 1/10 | 1 1/4 | 4 7/16 | 2 15/16 | 3 3/8 | 3/8 | 3 3/16 | 1 3/4 | 3 5/16 |
| 81416HV | 1 1/2" | 1/10 | 1 7/16 | 5 | 3 3/16 | 3 3/8 | 3/8 | 3 3/16 | 1 3/4 | 3 1/2 |
| 81417HV | 2" | 1/10 | 1 15/16 | 5 13/16 | 3 9/16 | 3 3/8 | 3/8 | 3 11/16 | 1 3/4 | 3 3/4 |



PATENTED TECHNOLOGY

| TEMP °F | PSI |
|---------|-----|
| 100 | 600 |
| 250 | 200 |



Specifications: Designed for residential, commercial or industrial use with water only. This approved Webstone valve is actuated by a blowout proof stem and features an adjustable packing gland. HV models fit both standard and high velocity pumps.

Webstone
VALVE INNOVATION

Quality and Commitment Since 1954

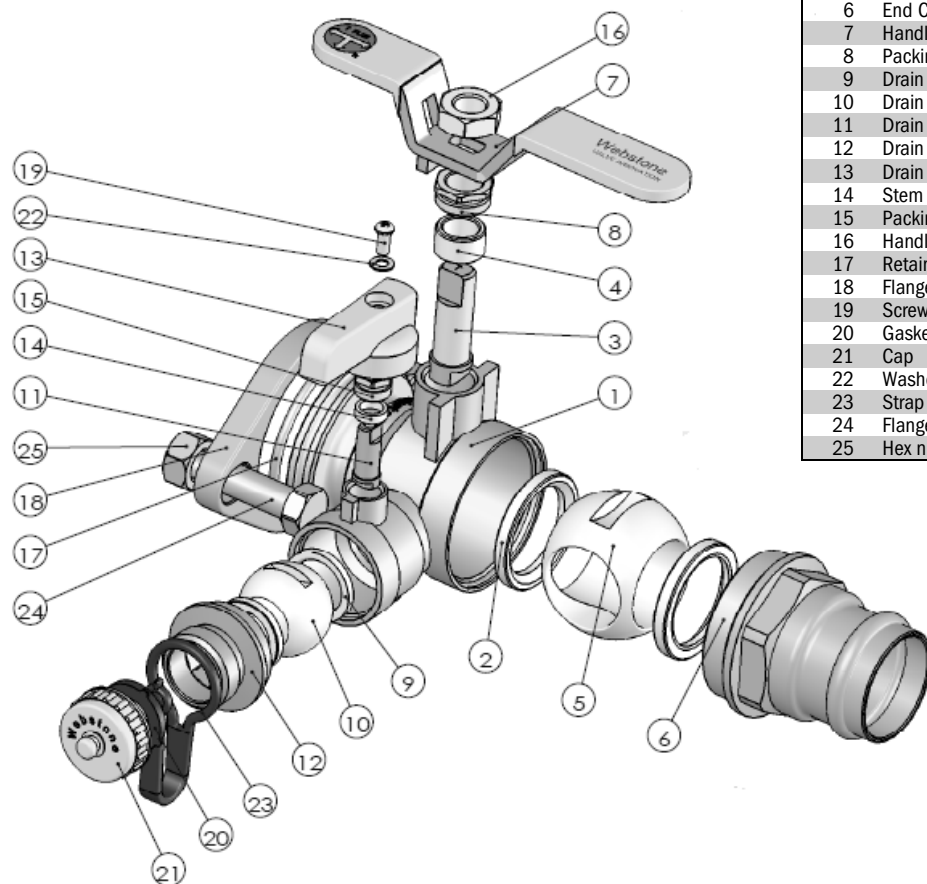
www.webstonevalves.com • P: (800) 225-9529 • F: (800) 336-5133

Webstone product specifications in U.S. customary units are approximate and are provided for reference only. Webstone reserves the right to change or modify product design, construction, specifications or materials without prior notice and without incurring any obligation to make such changes and modifications on Webstone products previously or subsequently sold.

8141spec_100913

THIS SPACE FOR DESIGNER/ENGINEER APPROVAL

| | | |
|-------------------------|------------|------------------------|
| Job/Customer _____ | Date _____ | Contractor _____ |
| Model Specified _____ | Qty _____ | Approved By _____ |
| Designer/Engineer _____ | Date _____ | Contractor's PO# _____ |
| Submitted by _____ | Date _____ | Other _____ |



| NO. | DESCRIPTION | MATERIAL |
|-----|---------------|-----------------------|
| 1 | Body | Brass |
| 2 | Seat | PTFE |
| 3 | Stem | Brass |
| 4 | Stem Seal | PTFE |
| 5 | Ball | Brass |
| 6 | End Cap | Brass |
| 7 | Handle | Plated Steel |
| 8 | Packing Gland | Brass |
| 9 | Drain Seats | PTFE |
| 10 | Drain Ball | Plated Brass |
| 11 | Drain Stem | Brass |
| 12 | Drain End Cap | Brass |
| 13 | Drain Handle | Epoxy Coated Aluminum |
| 14 | Stem Seal | PTFE |
| 15 | Packing Gland | Brass |
| 16 | Handle Nut | Stainless Steel |
| 17 | Retainer | Stainless Steel |
| 18 | Flange | Brass |
| 19 | Screw | Stainless Steel |
| 20 | Gasket | EPDM |
| 21 | Cap | Brass |
| 22 | Washer | Stainless Steel |
| 23 | Strap | PVC |
| 24 | Flange Bolts | Stainless Steel |
| 25 | Hex nuts | Stainless Steel |

Webstone
VALVE INNOVATION

Quality and Commitment Since 1954

www.webstonevalves.com · P: (800) 225-9529 · F: (800) 336-5133

Webstone product specifications in U.S. customary units are approximate and are provided for reference only. Webstone reserves the right to change or modify product design, construction, specifications or materials without prior notice and without incurring any obligation to make such changes and modifications on Webstone products previously or subsequently sold.

8141spec_100913